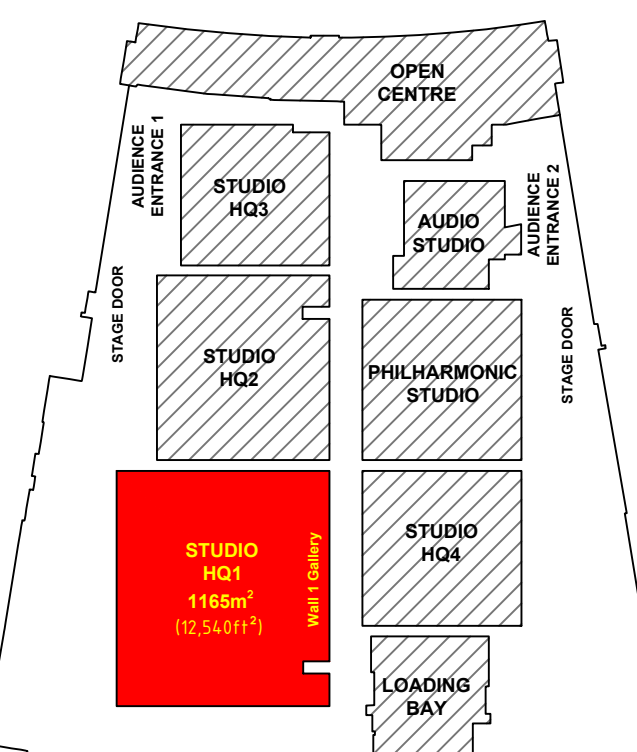


HQ1 Studio Plan  
Scenic Layout

STUDIO HQ1 LOCATION PLAN



Measurements

- STUDIO FLOOR GRID MADE UP OF 600mm SQUARES
- STUDIO WALL 2 TO WALL 4: 39.57m (129.8ft)
- STUDIO WALL 2 TO WALL 4 WITHOUT FIRELANE: 37.61m (123.4ft)
- STUDIO WALL 1 TO WALL 3: 29.57m (97.02ft)
- STUDIO WALL 1 TO WALL 3 WITHOUT FIRELANE: 27.43m (89.11ft)
- STUDIO SPACE: 1165sq m (12,540sq ft)
- STUDIO SPACE WITHOUT FIRELANE: 1031.6m (10,996.1ft)
- IMPOSED LOAD: 12kN per sq m
- HEIGHT TO UNDERSIDE OF LOWER GANTRY: 7.367m
- HEIGHT TO LOWER GANTRY UPPER HANDRAIL: 8.438m
- HEIGHT TO UPPER GANTRY UPPER HANDRAIL: 10.908m
- HEIGHT TO UNDERSIDE OF GRID IS: 15m
- HEIGHT TO OUTER CYC TRACK IS: 9m
- HEIGHT TO MIDDLE CYC TRACK IS: 9m
- HEIGHT TO INNER CYC TRACK IS 11.8m
- MAX. HEIGHT OF SCENERY HOOKS IS: approx 13.25m
- MAX. HEIGHT OF LIGHTING BARS IS: approx 13.15m
- SIZE OF LOAD IN DOOR: 4m Wide, 5.2m High

Hoists

- NUMBER OF LIGHTING HOISTS: 60 AT 2.25m, 6 CYC AT 2.25m, 44 LONG CYC AT 3.75m
- 22 SCENERY TRACKS WITH 3 OR 4 HOISTS IN EACH
- NUMBER OF SCENIC HOISTS WITH SWL 180KG: 74
- DISTANCE BETWEEN SCENIC TRACKS: 1.5m
- DISTANCE BETWEEN LIGHTING HOISTS: 1.5m

Mains

- GROUND LEVEL MAINS:
  - 2x 125A 3φ
  - 2x 63A 3φ (with 32A 3φ piggy backed)
  - 20x 32A 1φ (FUSED AT 25A)
  - 40x 16A 1φ
  - 80x 3Kw SINEWAVE DIMMER CHANNELS
- LOWER GANTRY MAINS:
  - 2x 63A 3φ
  - 4x 32A 1φ (FUSED AT 25A)
  - 8x 3Kw SINEWAVE DIMMER CHANNELS
- UPPER GANTRY MAINS:
  - 2x 63A 3φ
  - 12x 32A 1φ (FUSED AT 25A)
  - 24x 3Kw SINEWAVE DIMMER CHANNELS
- LIGHTING HOIST MAINS:
  - 160x 32A 1φ (FUSED AT 25A)
  - 580x 3Kw SINEWAVE DIMMER CHANNELS
  - 160x 5Kw SINEWAVE DIMMER CHANNELS
- GRID MAINS:
  - 2x 400A 3φ POWERLOCK (FUSED AT 320A)
  - 4x 32A 3φ (FUSED AT 25A)
  - 4x 32A 1φ (FUSED AT 25A)
  - 12x 3Kw SINEWAVE DIMMER CHANNELS
  - 4x 5Kw SINEWAVE DIMMER CHANNELS

- SWL
  - STUDIO FLOOR 12kN/m<sup>2</sup>
  - GANTRY FLOOR 500kg/m<sup>2</sup>
  - GANTRY HANDRAIL CENTRE POINT 100kg, THIRD POINT 120kg
  - GRID 150kg/m<sup>2</sup>

N.B. MEASUREMENTS ARE INCLUDED AS A GUIDE. PLEASE DOUBLE CHECK ON SITE IF CRITICAL TO PRODUCTION. ADEQUATE ARRANGEMENTS FOR ACCESS AND EGRESS TO AND FROM THE STUDIO SHOULD BE ALLOWED IN LINE WITH REGULATIONS

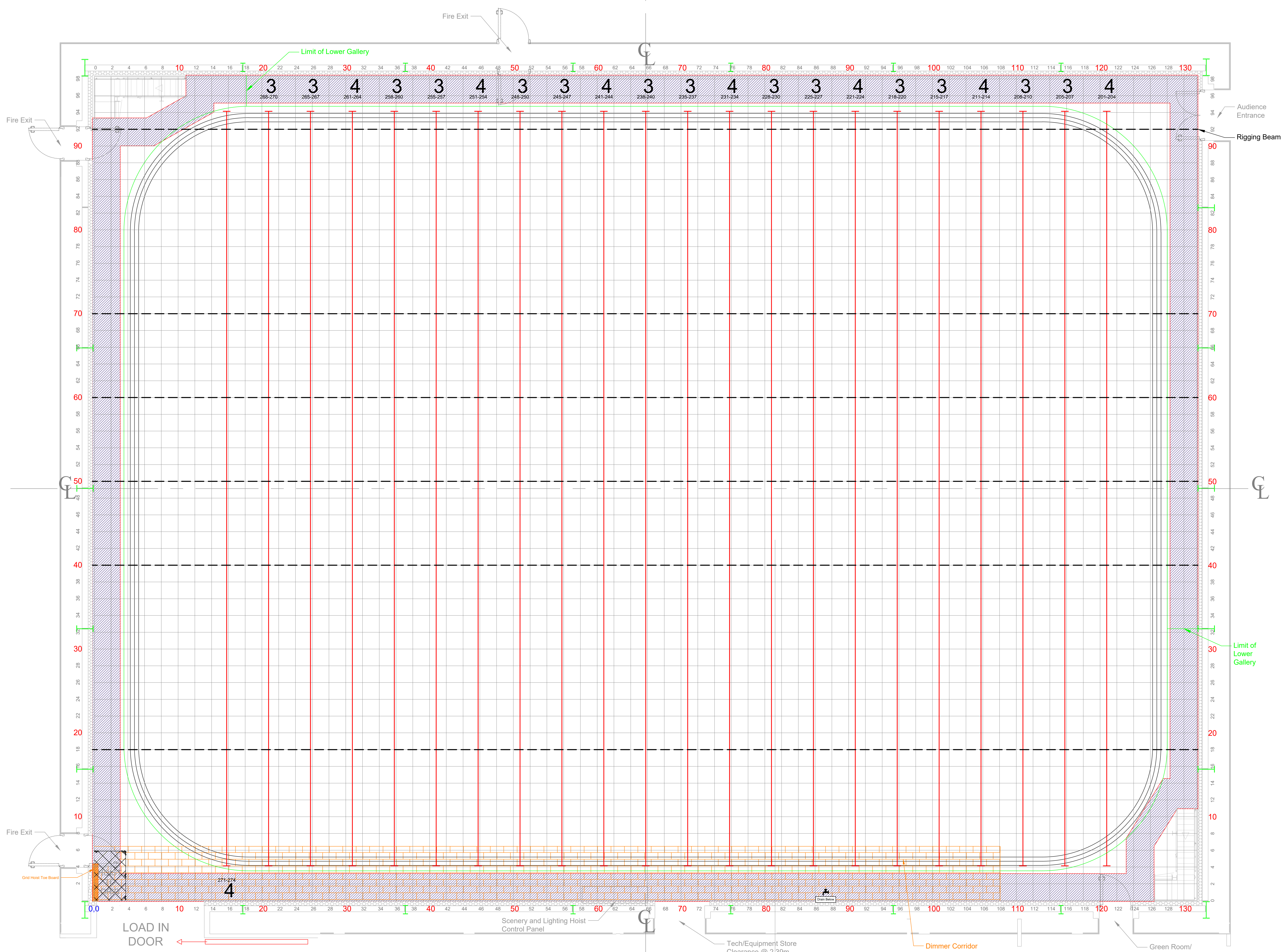
KEY:

- Fire lane
- Water Tap
- Fire Alarm Beacon
- Fire Alarm Sounder
- Facility Panel
- 3 Phase Mains Outlets

PRODUCTION:  
DIRECTOR:  
DESIGNER:  
DRAWN BY:  
PRODUCTION DATE:

Useful Telephone Numbers  
24hr Control Room 0161 855 6400  
back-to office 0161 888 5111  
MCR 0161 888 5151  
Unauthorised copying or distribution is prohibited

SCALE:  
1:50 @  
ISO A0 (1189 X 841MM)  
Version: 2  
Drafted 10-Jan-22, TK



Galleries (Level 1) - Scenery Runway (Ground Level)